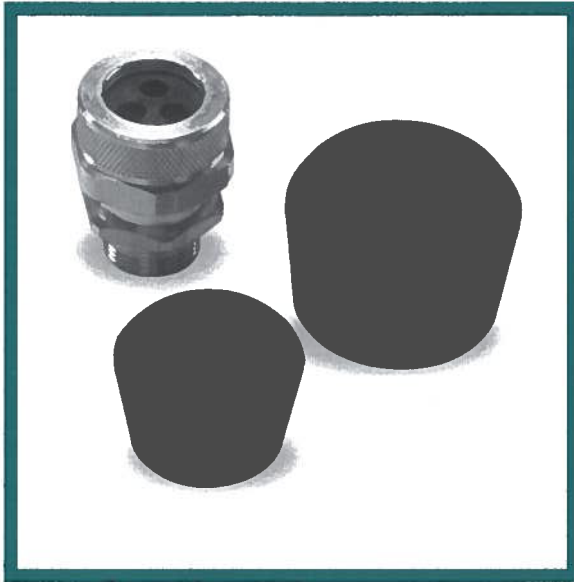




MULTIPLE HOLE BUSHINGS



The Tuff-Seal family of Multiple Hole Bushings are the answer when multiple conductors need to be terminated into one fitting. With over 300 configurations available, when you use Remke multiple hole bushings you'll save both money and space by using a single bushing & cord connector instead of separate cord grips for each length of cable.

Any of our Multiple Hole Bushings can fit into any standard Remke cord connector made from aluminum, nickel-plated aluminum, steel, stainless steel, nylon or Valox®. Standard bushings are made from Neoprene but optional materials include silicone for high-temperature applications.

MULTIPLE HOLE BUSHINGS

| Bushing Only Part Number | Form Size | Number of Holes | Diameter Each Hole (IN) | Conduit Size |
|--------------------------|-----------|-----------------|-------------------------|------------------|
| SRB-100-UF1 | 2 | 1 | Oval - .425 x .225 | 1/2" or 3/4" |
| SRB-100-UF2 | 2 | 1 | Oval - .610 x .225 | 1/2" or 3/4" |
| SRB-103-2 | 2 | 2 | .187 | 1/2" or 3/4" |
| SRB-104-2 | 2 | 2 | .250 | 1/2" or 3/4" |
| SRB-104-3 | 2 | 3 | .250 | 1/2" or 3/4" |
| SRB-10532-2 | 2 | 2 | .156 | 1/2" or 3/4" |
| SRB-10532-3 | 2 | 3 | .156 | 1/2" or 3/4" |
| SRB-10532-4 | 2 | 4 | .156 | 1/2" or 3/4" |
| SRB-10564-2 | 2 | 2 | .078 | 1/2" or 3/4" |
| SRB-10732-2 | 2 | 2 | .218 | 1/2" or 3/4" |
| SRB-10732-3 | 2 | 3 | .218 | 1/2" or 3/4" |
| SRB-10932-2 | 2 | 2 | .281 | 1/2" or 3/4" |
| SRB-201764-2 | 3 | 2 | .265 | 1/2" or 3/4" |
| SRB-201764-3 | 3 | 3 | .265 | 1/2" or 3/4" |
| SRB-201964-2 | 3 | 2 | .296 | 1/2" or 3/4" |
| SRB-201964-3 | 3 | 3 | .296 | 1/2" or 3/4" |
| SRB-201964-4 | 3 | 4 | .296 | 1/2" or 3/4" |
| SRB-202164-2 | 3 | 2 | .328 | 1/2" or 3/4" |
| SRB-203-4 | 3 | 4 | .187 | 1/2" or 3/4" |
| SRB-204-2 | 3 | 2 | .250 | 1/2" or 3/4" |
| SRB-204-3 | 3 | 3 | .250 | 1/2" or 3/4" |
| SRB-204-4 | 3 | 4 | .250 | 1/2" or 3/4" |
| SRB-205-2 | 3 | 2 | .312 | 1/2" or 3/4" |
| SRB-20516-3 | 3 | 3 | .312 | 1/2" or 3/4" |
| SRB-20732-2 | 3 | 2 | .218 | 1/2" or 3/4" |
| SRB-20732-4 | 3 | 4 | .218 | 1/2" or 3/4" |
| SRB-20932-3 | 3 | 3 | .281 | 1/2" or 3/4" |
| SRB-300-3SP1 | 4 | 3 | .300 | 3/4" or 1" |
| SRB-300-3SP2 | 4 | 3 | .225 | 3/4" or 1" |
| SRB-300-4SP1 | 4 | 4 | .220 | 3/4" or 1" |
| SRB-300-4SP2 | 4 | 4 | .340 | 3/4" or 1" |
| SRB-301964-2 | 4 | 2 | .296 | 3/4" or 1" |
| SRB-301964-4 | 4 | 4 | .296 | 3/4" or 1" |
| SRB-301964-5 | 4 | 5 | .296 | 3/4" or 1" |
| SRB-303-3 | 4 | 3 | .187 | 3/4" or 1" |
| SRB-303-4 | 4 | 4 | .187 | 3/4" or 1" |
| SRB-304-5 | 4 | 5 | .250 | 3/4" or 1" |
| SRB-305-3 | 4 | 3 | .312 | 3/4" or 1" |
| SRB-306-2 | 4 | 2 | .375 | 3/4" or 1" |
| SRB-500-2 | 5 | 2 | .500/.375 | 1 1/4" or 1 1/2" |
| SRB-506-3 | 5 | 3 | .375 | 1 1/4" or 1 1/2" |
| SRB-508-2 | 5 | 2 | .500 | 1 1/4" or 1 1/2" |
| SRB-509-3 | 5 | 3 | .562 | 1 1/4" or 1 1/2" |
| SRB-510-2 | 5 | 2 | .625 | 1 1/4" or 1 1/2" |

NOTE: Numerous other configurations are available as stock items. Consult factory.